



THE CHILSTONE GARDEN

THE CHILSTONE GARDEN

Centred around a 'chilled out' theme 'The Chilstone Garden' is designed with the busy urbanite in mind, a space to unwind after a hectic day. Chilstone's Garden House takes centre stage inside which is a floating 1968 designed crystal clear hanging chair, a wonderful place to relax & unwind in a personal bubble, watching the 'everlasting' ice sculpture gently melt into a grown-up paddling pool.

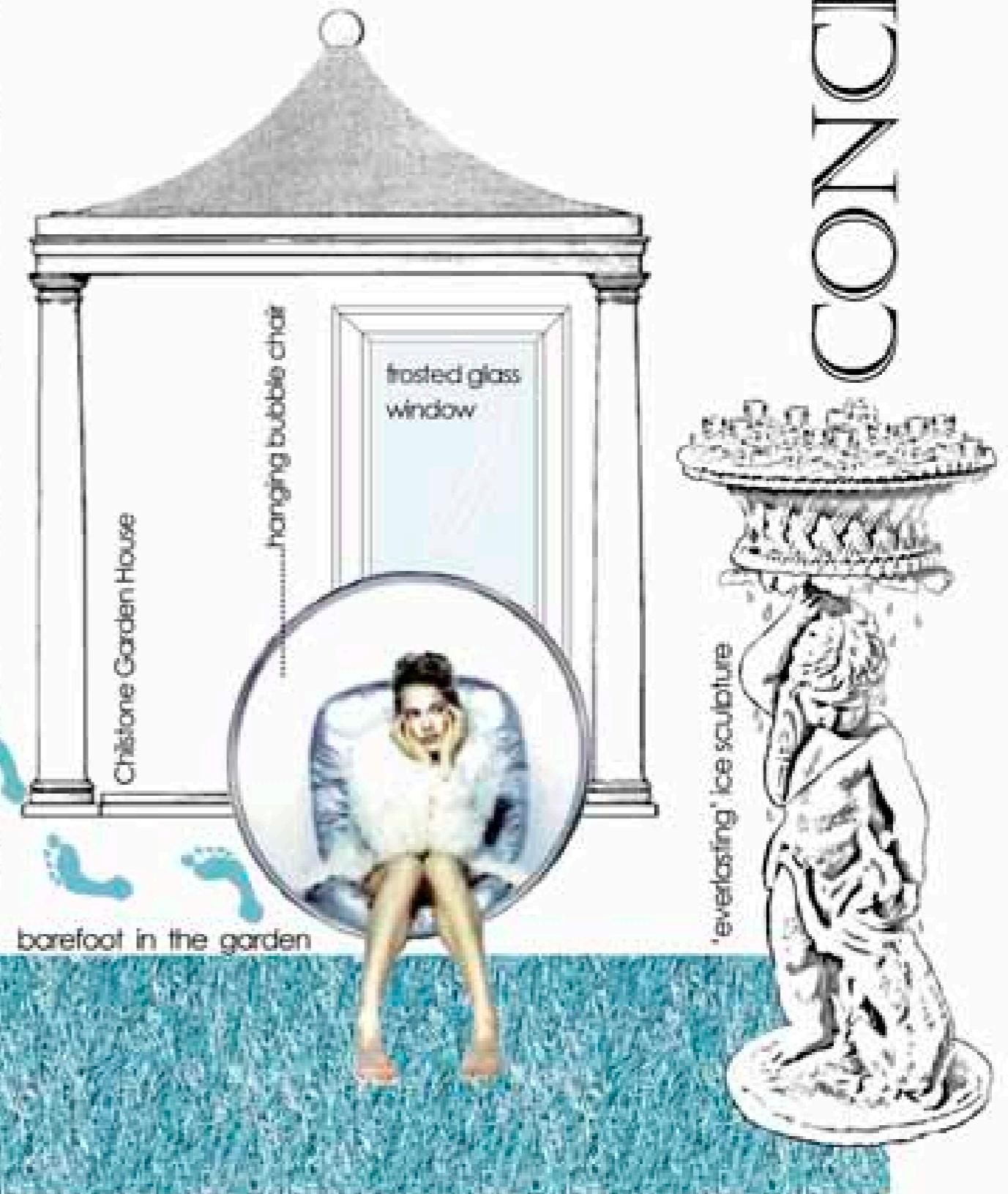
The pool ensures our busy urbanite & friends do not take themselves too seriously, who could resist sitting on the Garden House floor on a sweltering day, with feet dangling in cool refreshing water sipping something chilled? Wet feet are no problem in the Chilstone Garden, conventional paving is replaced with a stunning non slip, shag pile outdoor carpet, yes an outdoor carpet used for the first time in a Chelsea Show Garden ... the carpet is designed for British weather with the added bonus of being luxuriously soft to walk on in bare feet.

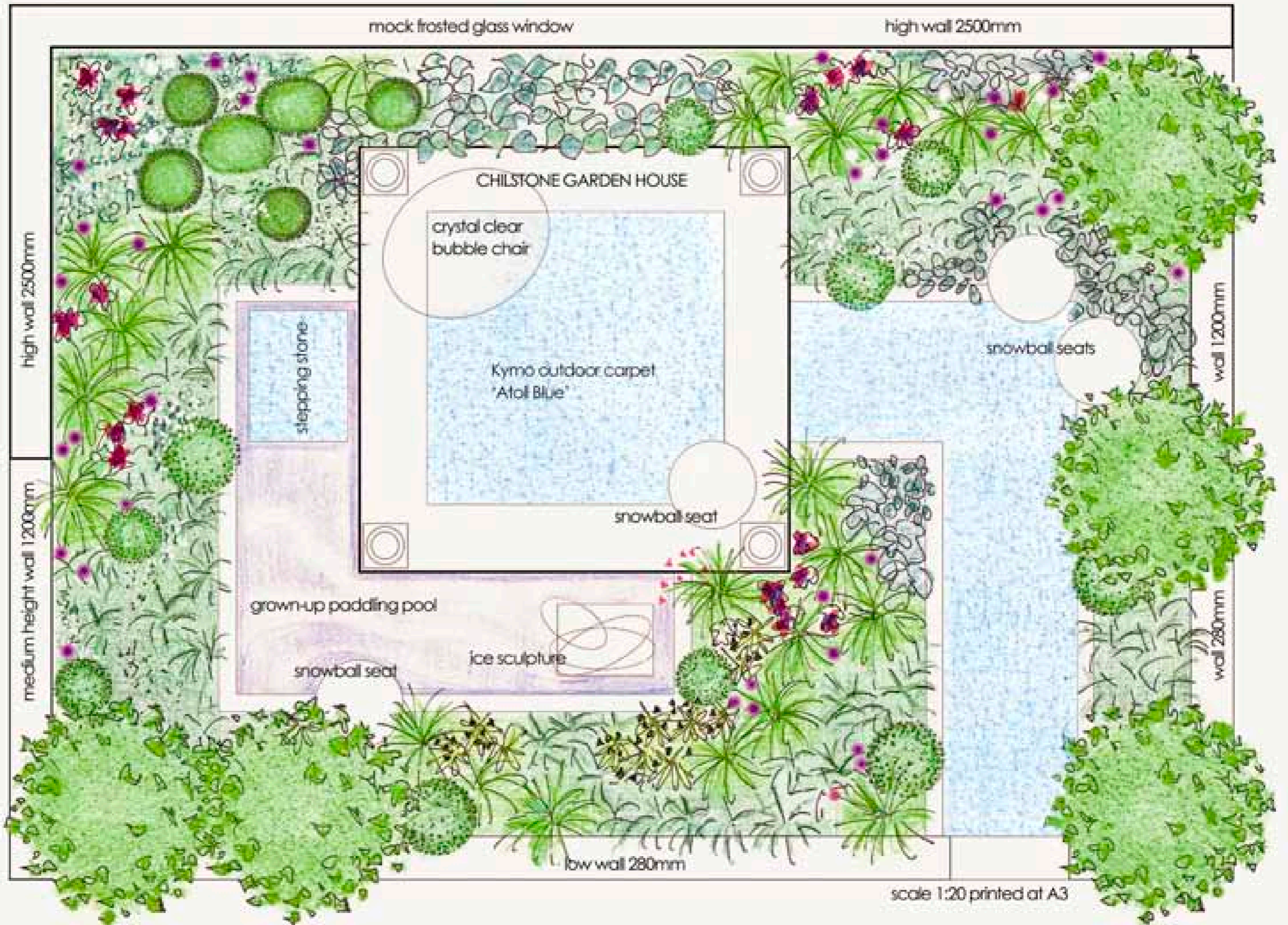
Visitors easily visualise the appeal of an extra room outside where they can wander from indoors straight into their stylish garden ... in bare feet, it is a very desirable life-style.

Cool coloured planting accentuates the 'chilled out' atmosphere of the garden with snow-balls of alliums, cow parsley and ballis parsley giving the impression of a dusting of snow, floating above a restful bed of decorative grasses that ripple in the slightest breeze & trees carefully placed to frame views.

The airy planting, light transparency of the bubble chair, aqua coloured carpet & pale stone walls make for an eye catching combination designed to draw media attention & engage conversation with Chelsea's 1.57,000 visitors.

Chilstone, are an established company renowned for their classical portfolio, so perhaps a traditional statue cast in shimmering clear resin to mimic melting ice might be considered a little radical ... but with a bowl full of real ice cubes Chilstone are celebrating a very modern Chelsea garden in a contemporary style some might describe as 'traditional with a twist.'





HANGING BUBBLE CHAIR

Crystal clear acrylic hanging chair forms a 'set-piece' arrangement with the ice statue framed in the Garden House

Designed by Eero Aarnio 1968

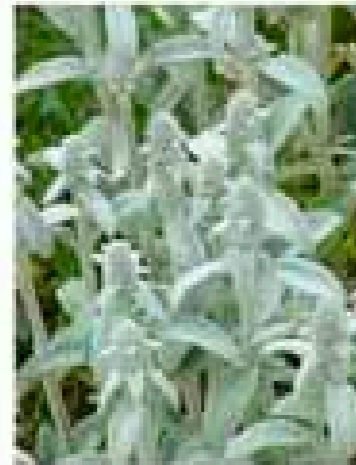
Genuine reproductions available from The Design Centre Edinburgh & several authorised UK distributors inc (nest.co.uk)

Dimensions

108 cm high x 83 cm deep



colour shown below 'Atoll Blue'



COOL PLANTING SCHEME

STONE SNOWBALL SEATS

OUTDOOR CARPET

Late 1960's style shag-pile carpet along with the bubble chair lends a modern retro atmosphere.

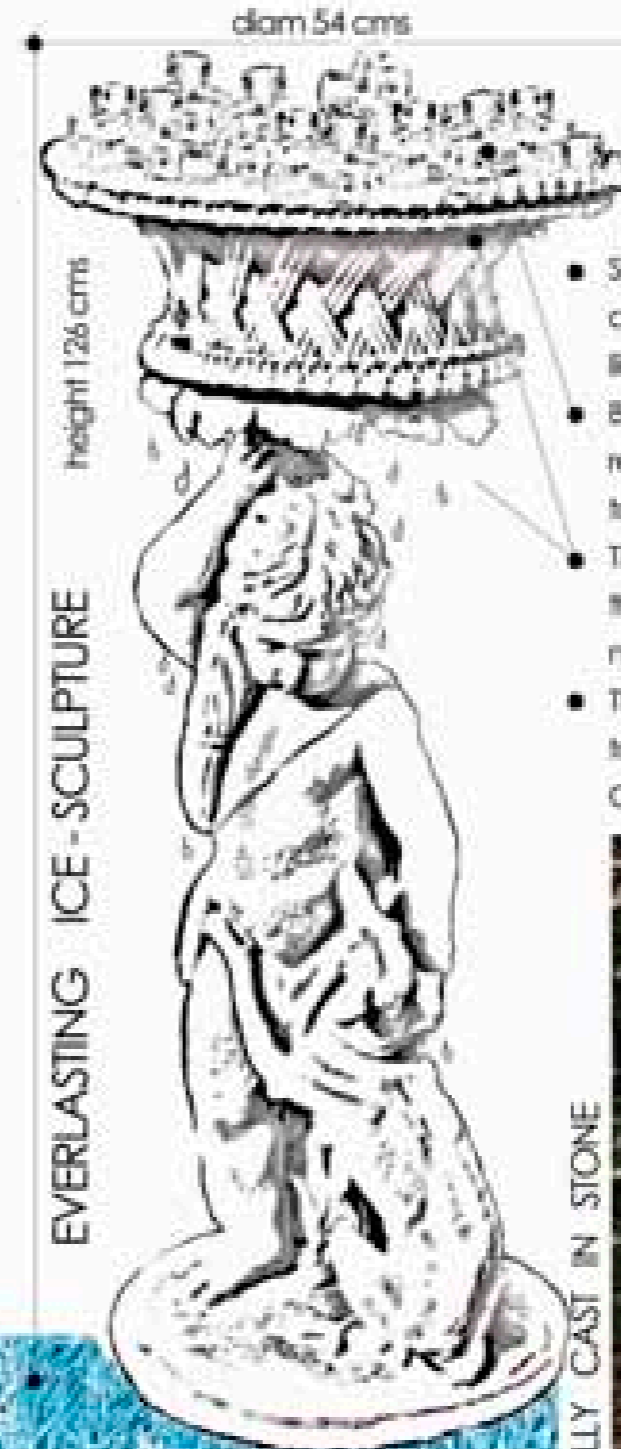
Perfect for the 'Room Outside' being very comfortable to walk on in bare feet ... straight from the kitchen into the garden

Durable polyester means the carpet can be left outdoors 365 days a year.
Drainage holes in the backing
Excellent weed suppressant

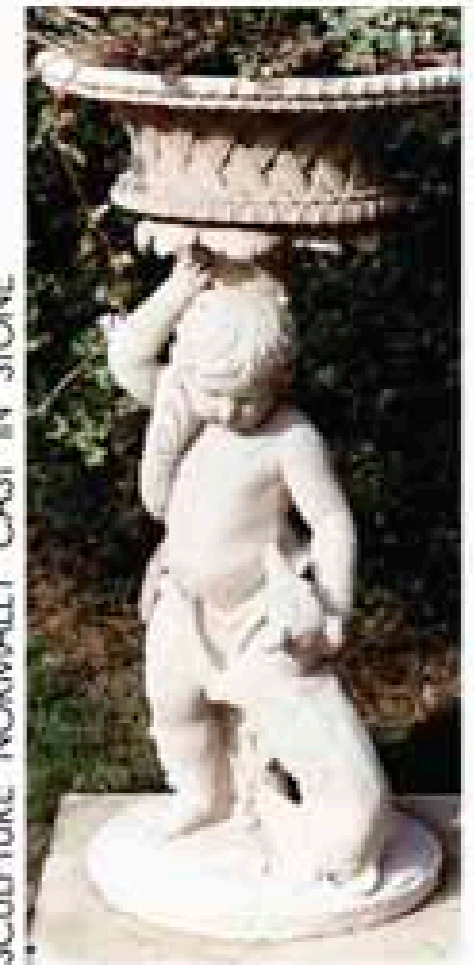
Easy-care can be hosed down & even vacuumed in dry weather!

Non-slip appropriate for use alongside the paddling pool

Manufactured by German flooring company Kymo www.kymo.de
Several UK distributor's including furniture store Chaplins of London



- Sculpture uses an existing mould cast in sparkling clear resin to look like an ice carving.
- Bowl is filled with a solid ice block renewed daily before show opens to public.
- Tiny holes drilled in the bowl allow the ice to drip - mimicking a melting ice sculpture.
- The statue is placed in the garden to create conversation with Chelsea visitors.





Side section SS View 3

Visitors have clear view through Garden House from the side of the garden



Front section FF Views 1 & 2

Garden House frames the 'main view' of the garden - taking in the ice-sculpture, frosted window & crystal clear chair

View 2 - to the right of the above illustration is the view from the garden entrance - the eye is led irresistably by the stunning Aqua carpet to the snowball seats and set piece planting arrangement toward the back of the garden

planting concept



As the garden is designed around a chilled out theme - plants will be cool coloured greys, purples blues pinks and lots of white.

Snowballs of white & purple alliums hover above grasses - Box mop head balls float above planting echoing the crystal clear bubble chair & Chiltone Snowball seats.

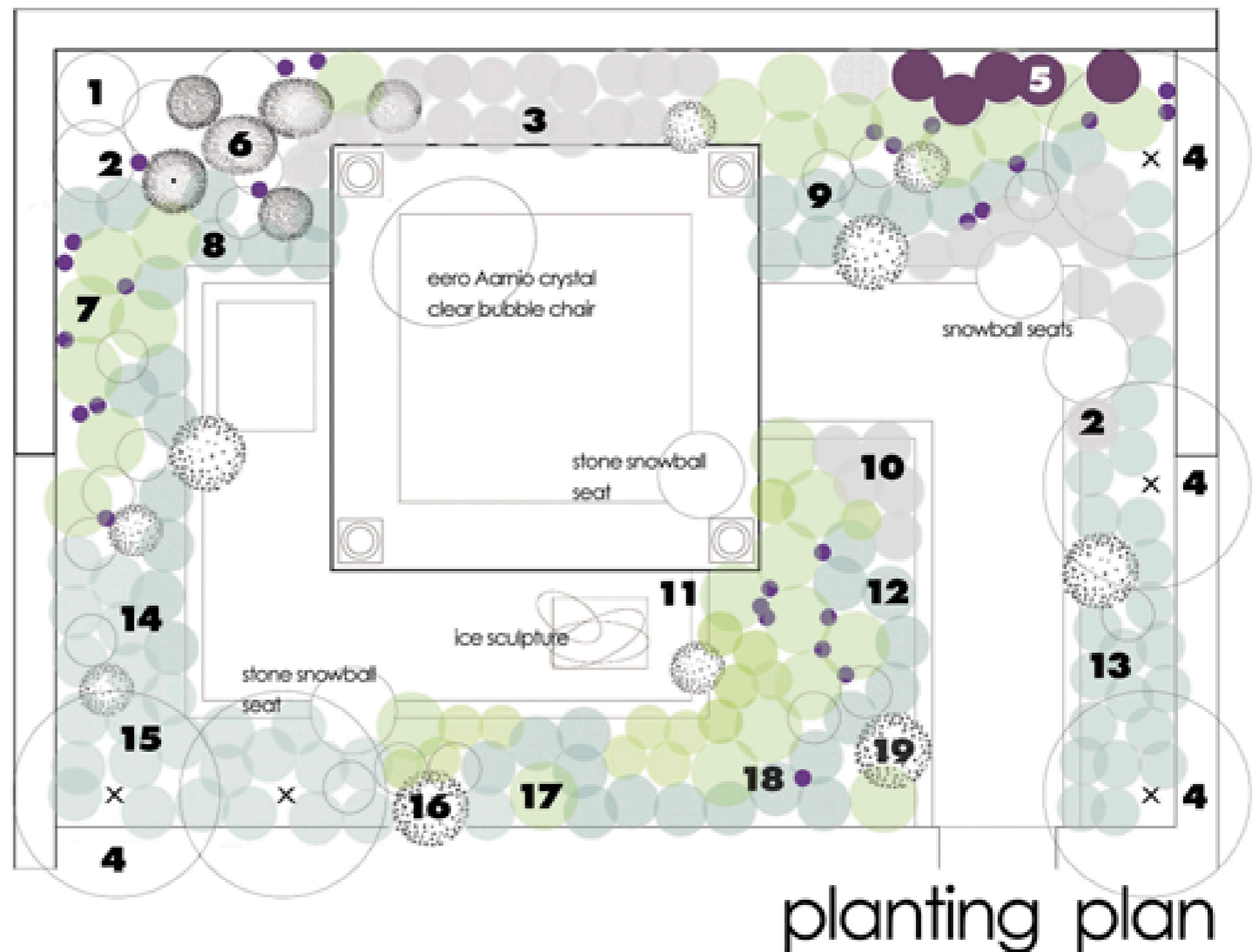
Anthiscus (cow parsley) & cenciophium denudatum [baltic parsley] give an ethereal effect almost as if the garden has been dusted with snow!

White edged hostas look as though encrusted with ice - complementing the ice-sculpture.

Tall grey icicle-like verbascum bombyciferum & stachys 'Big Ears' pick up on the 'cool' Aqua carpet.

As for the rest... a ground covering of grasses add movement & contrast with the solid assuredness of the garden house & surrounding walls.

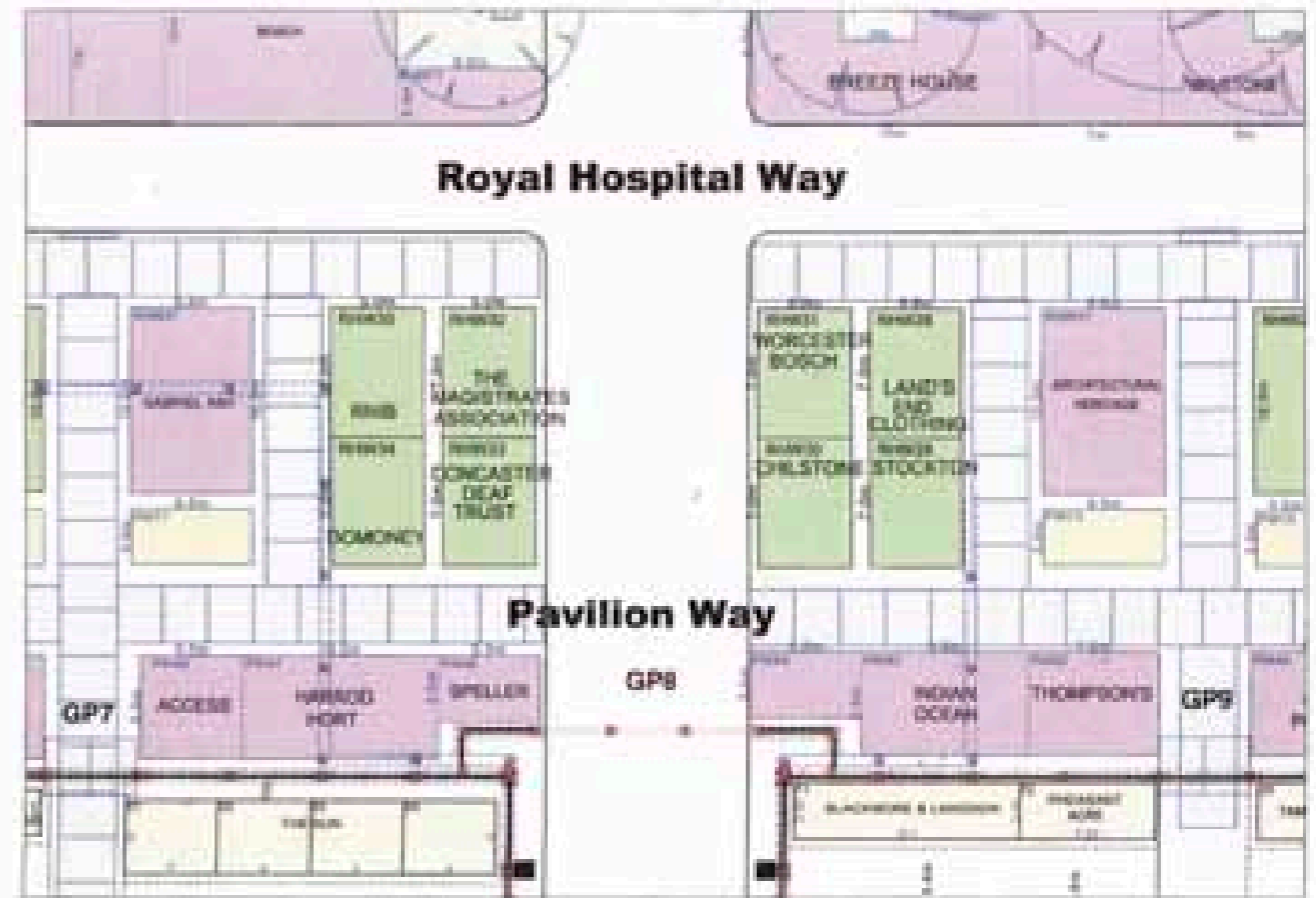
- 1 Amaranthus
- 2 Allium 'Purple Sensation'
- 3 Hosta 'Big Daddy'
- 4 Sorbus aria 'Lustescens'
- 5 Penstemon digitalis 'Huskers Red'
- 6 Phormium 'Black Adder'
- 7 Heuchera 'Black Beauty'
- 8 Stachys byzantina
- 9 Iris 'Cliffs of Dover'
- 10 Salvia argentea
- 11 Artemisia 'Silver Flury'
- 12 Sedum 'Coca Cola'
- 13 Luzula nivea
- 14 Iris 'Jane Phillips'
- 15 Helictotrichon
- 16 Stipa gigantea
- 17 Heuchera 'Chocolate Ruffles'
- 18 Knautia macedonica
- 19 Lobelia 'Queen Victoria'



Map of Showground



Position on Showground



The Great Pavillion

Key Dates

Build Up Thursday 12 May - Sunday 22 May [10 days]

Press Day & Judging Monday 23 May

Show Open Tuesday 24 May - Friday 27 8 am - 8 pm
Saturday 28 May [final day] 8 am - 5.30 pm

Breakdown Sunday 29 May - Tuesday 31 May